



www.jeffreygross.co.uk

CARDIFF

VALE

CAERPHILLY

BRISTOL



Ffordd Garthorne

LLOYD GEORGE AVENUE



A spacious top floor duplex, bang in the middle of Cardiff Bay & Cardiff city !

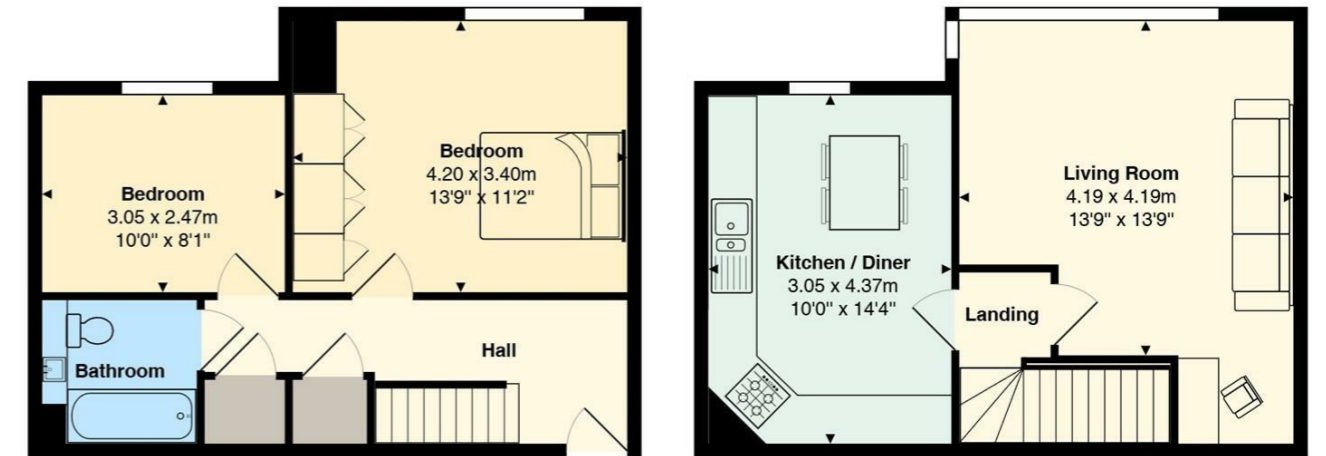
Comments by Mr Ramzy Bancroft



Property Specialist
Mr Ramzy Bancroft
Branch manager

Ramzy@jeffreycross.co.uk

Amalfi House



Total Area: 72.0 m² ... 775 ft²

All measurements are approximate and for display purposes only

Comments by the Homeowner





Ffordd Garthorne

Lloyd George Avenue, Cardiff, CF10 4DA

Asking Price

£220,000



2 Bedroom(s)



1 Bathroom(s)



775.00 sq ft

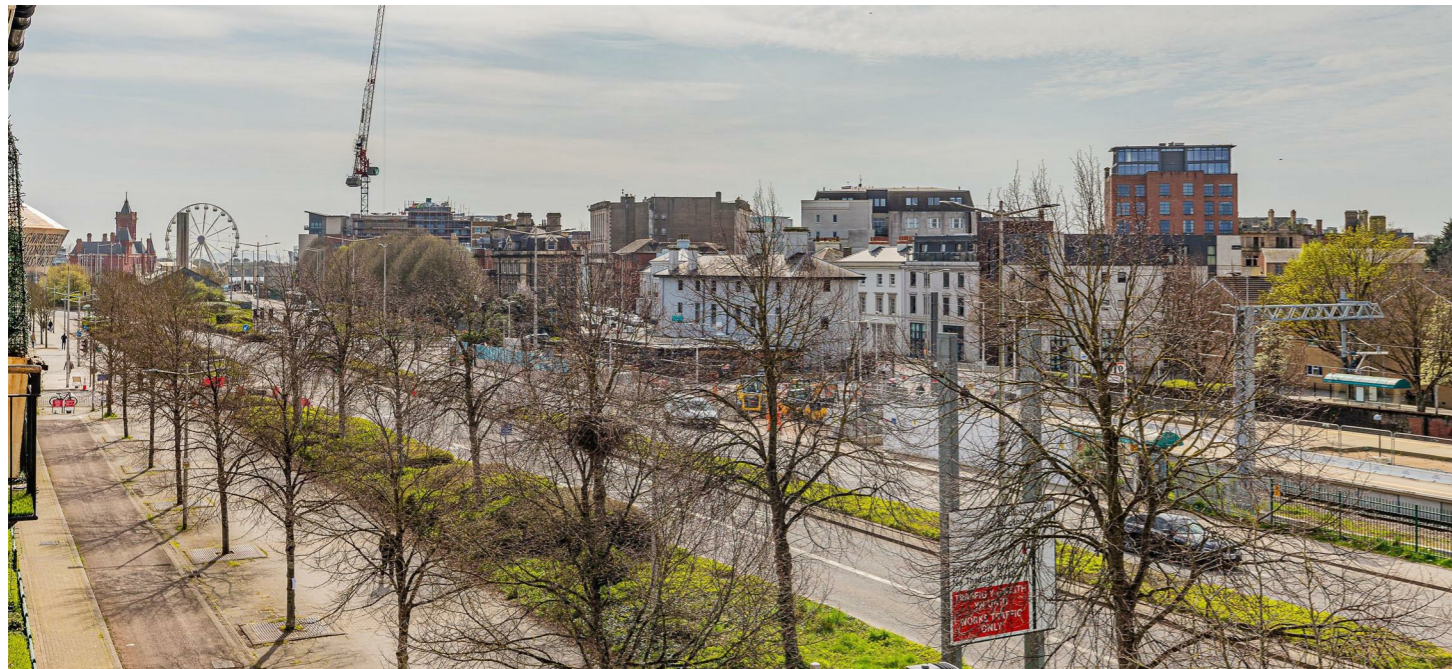


Contact our
Penylan Branch

02920 499680

*** STUNNING DUPLEX FLAT ***

We are pleased to offer for sale this lovely top floor Duplex apartment in Lloyd George Avenue in Cardiff Bay. The property is spread over two floors and has two great size bedrooms, bathroom, with a lounge diner and spacious kitchen diner on the upper floor. The apartment boasts allocated parking, and views across to Cardiff Centre and & Mermaid Quay in Cardiff bay. Further benefiting from NO ONWARD CHAIN.



CARDIFF

VALE

CAERPHILLY

BRISTOL

www.jeffreygross.co.uk



Hall

Bathroom

Bedroom 1

Bedroom 2

Lounge Diner

Kitchen Diner

Tenure

Leasehold, with *** years remaining, but this is to be confirmed by a buyers solicitor

Service charge & Ground rent

tbc

Parking

We are informed that there is one allocated parking space, and a visitor permit





Energy Efficiency Rating		Current	Potential
Very energy efficient - lower running costs			
(92 plus) A			
(81-91) B			
(69-80) C		76	79
(55-68) D			
(39-54) E			
(21-38) F			
(1-20) G			
Not energy efficient - higher running costs			
England & Wales		EU Directive 2002/91/EC 